

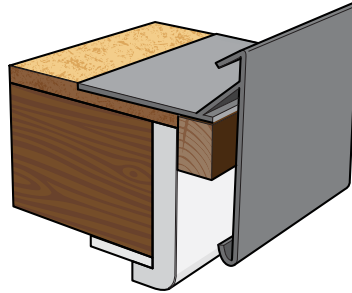


Edge Trim Roof Fixing/Mounting Technique

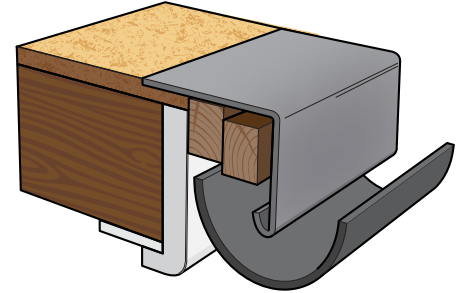
INSTALLING THE TRIMS

Select the required trims for the job. Drill and Countersink holes in a staggered manner at 300mm centres along the trim length (See page two). Do the same for the corners, 2 fixings on each side of the corner.

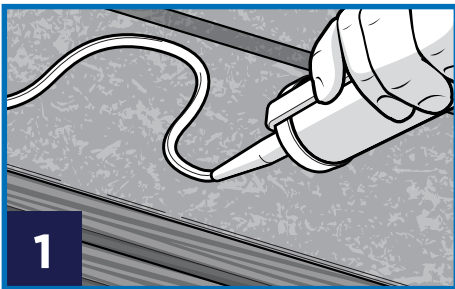
Cut the trims to the desired length and using contact adhesive/super glue (i.e Mitre Fast) fix the trim tabs in place enabling them to be slotted together.



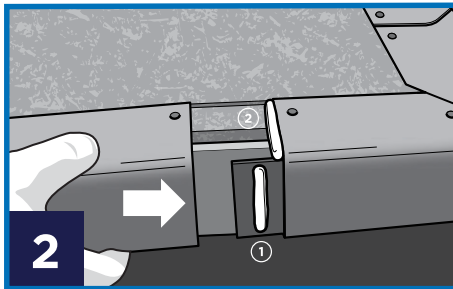
Check trim fixed with single batten



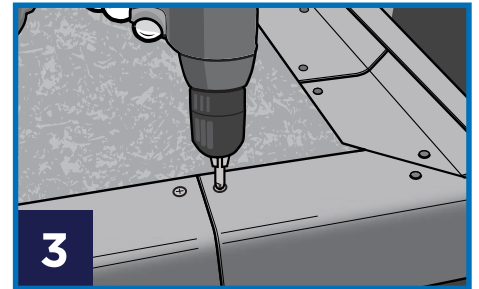
Drip trim fixed with double batten



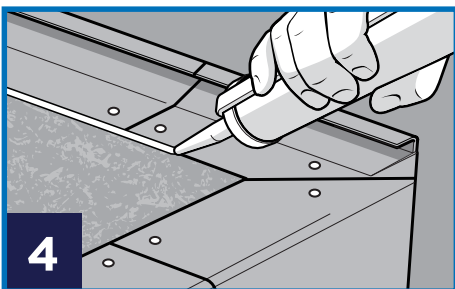
1 Apply a bead of Mega Mastic as shown onto the edge of the board and batten as illustrated. The board must be routed to allow the trim to sit flush with the board.



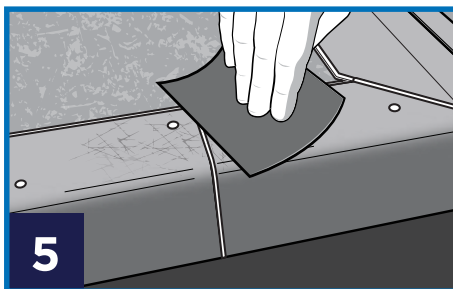
2 Begin by pressing one of the edge trims into place onto the mastic. Apply a small bead of Mega Mastic onto the exposed half of the adhered trim tab (1) and onto the end of the trim you are adjoining (2), then slot into place. Excess mastic should squeeze out from the joint. (This can be cut off when cured or wiped off with a solvent cleaner whilst uncured.) Work your way around the roof slotting one trim into the next following the same process.



3 The trims can be moved slightly before they are secured with screws allowing you to position/-seat them as required. Once happy with the positioning of the trims, screw the trims into place using the counter sunk holes you made earlier. The screw heads must be slightly sunken below the surface of the trim. Use a dab of Mega Mastic to fill the void left by the screws. A small spreading/filling knife can be used to tool the mastic flat.



4 Install a bead of Mega Mastic along the internal edges of the trim. This will prevent the loss of liquid resin where any discrepancies or undulations in the board may have created a gap allowing seepage of material.



5 Abrade the surfaces of the trim which are to be coated with Bullet Roof resin to ensure good adhesion. The face of the trims do not require coating as they are pre-pigmented and have a finished surface.